

# MAG-UX

Visualize your performance & security

## IT Business Performance & Security Monitoring

MAG-UX monitors the performance and security of IT service infrastructure in a highly visible and intuitive manner. It also enables to pinpoint a service failure promptly across end-to-end sections.



### Easy

Easy to install, set up and use; inter-connection API supported.



### Real-Time

Visualizing the status of users, networks and servers, in real-time of one second level, to detect failed sections.



### Intuitive

Providing intuitive interfaces across end-to-end sections.



**MAG-UX**  
www.magdata.net

# Visualize your performance & security

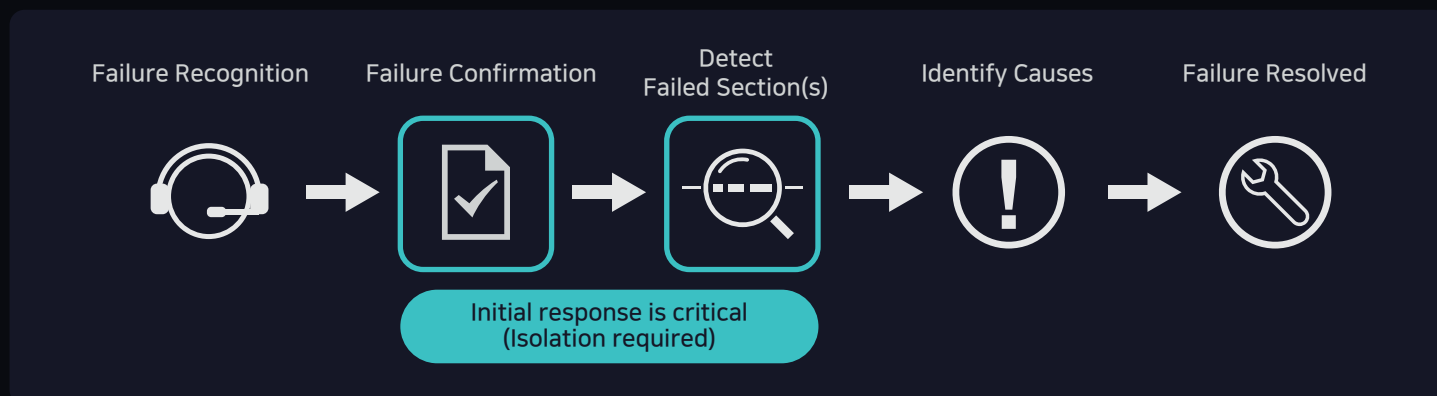


Performance Monitoring

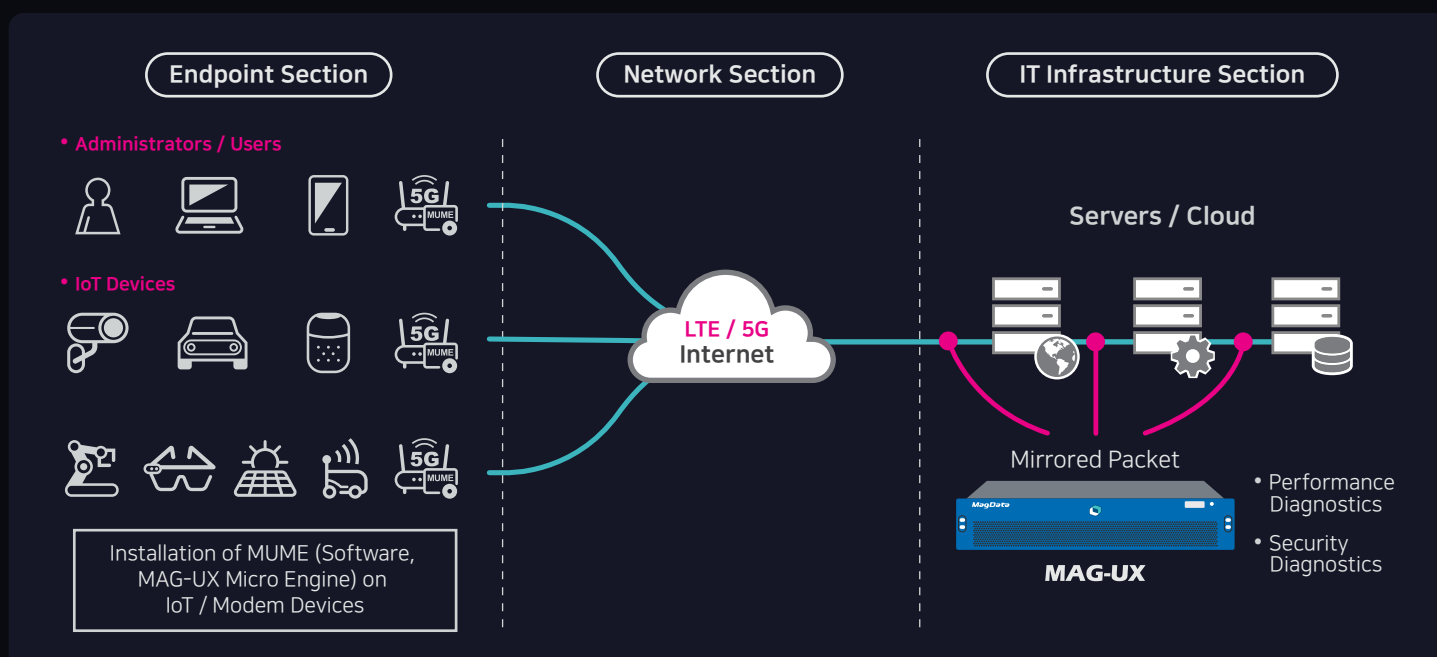


Security Monitoring

## Steps of Processing Failures



## MAG-UX Installation and components



Endpoint Section

Check response quality metrics for users/IoT devices

- Verify health checks (Traffic/Port/ICMP)
- Measure usage and network latency (BPS/RTT)
- Detect abnormal access to IoT devices
- Detect the current number of users in queue and concurrent users

Network Section

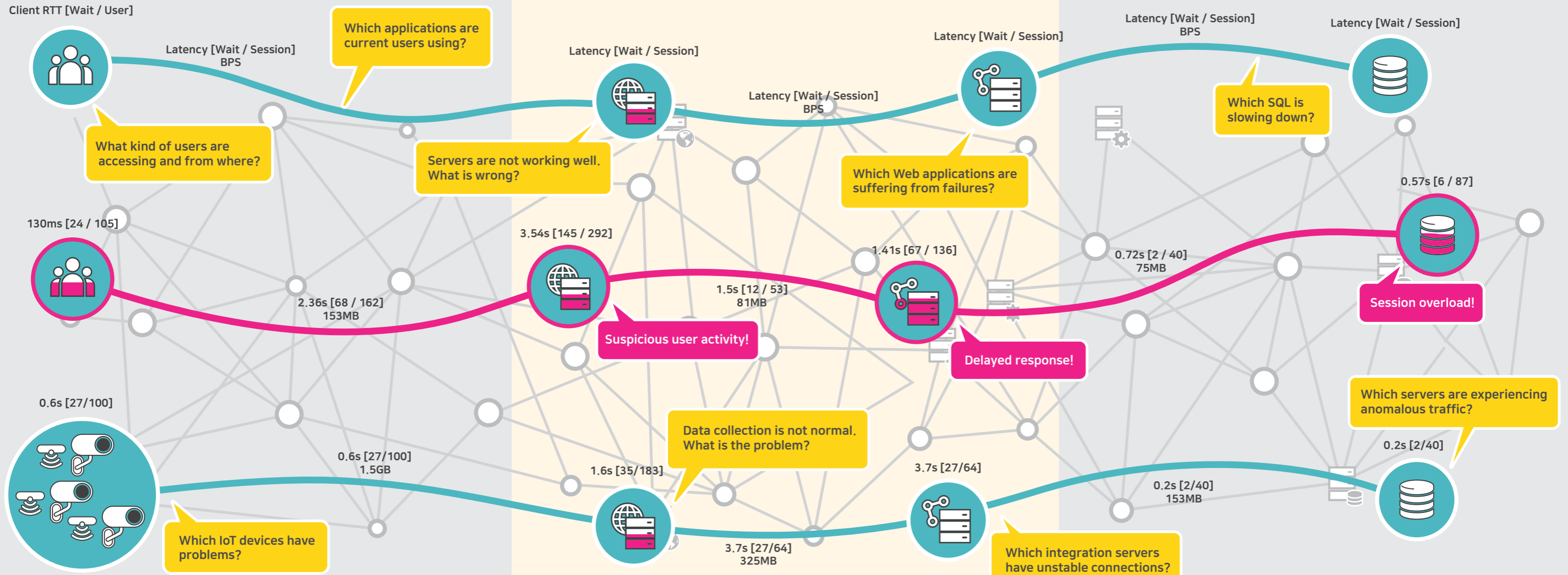
Monitor actual traffic status in the network section

- Measure network round-trip time (RTT) and traffic usage (BPS/TPS/etc)
- Monitor user applications (5Tuple/URL)
- Analyze and track anomalous behaviors (CPS/PPS/Modified URL)

IT Infrastructure Section

Check response quality metrics by server/service

- Check response time (latency) by server/service
- Check the number of sessions waiting for a response (wait) by server/service
- Check transaction status and results by server/service



Real-Time

Provides warnings and alerts of status reaching beyond certain thresholds by monitoring at one-second interval



Real-Time Monitoring



Real-Time Alert



Real-Time Notification

Analysis for Each Section

Analyzes status of IT infra by section level as well as component level, and signals any anomalous status



Client



Network



Server

Performance / Security Monitoring & Analytics

Provides various dashboards and real-time analysis tools for performance and security monitoring



Flow Map



Dashboard



Analysis Tools

# MAG-UX 주요 대시보드

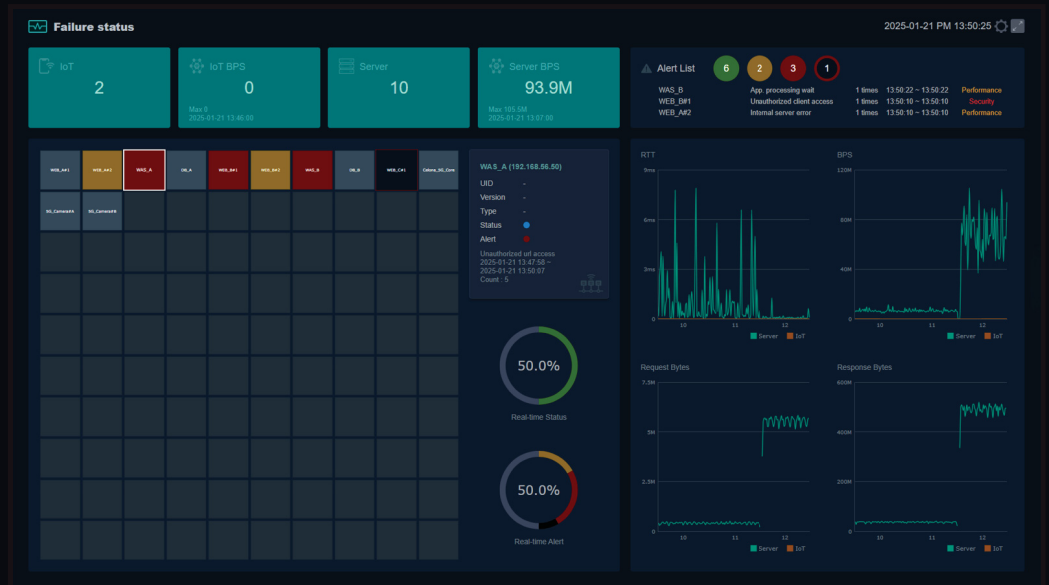
## ● Dashboard

Provides a performance quality dashboard for IT infrastructure services.



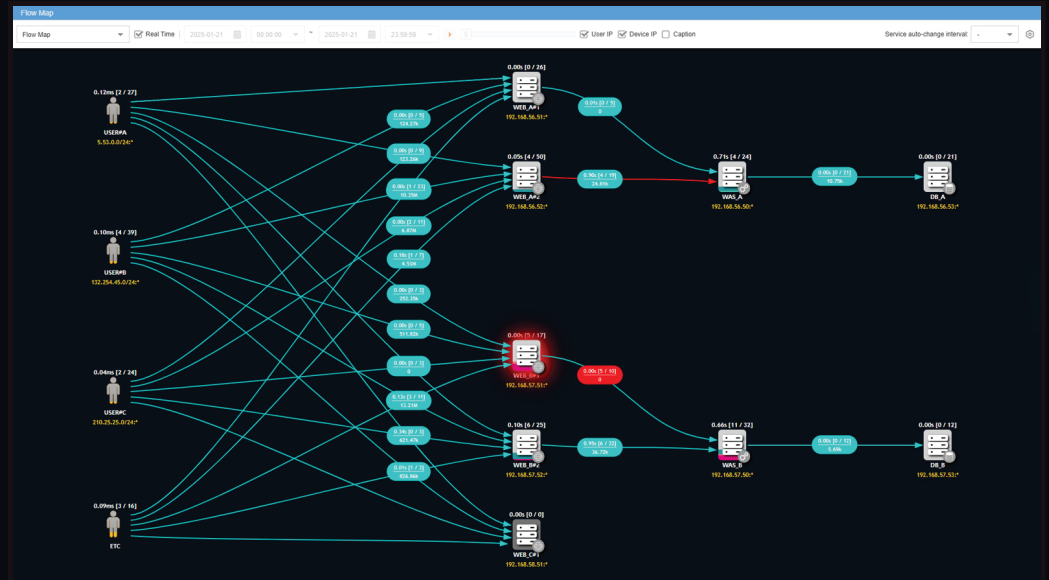
## ● Failure Status

Visualizes performance and security alerts for IoT devices/IT infrastructure in real-time.



## ● Flow Map

Provides an intuitive view of the communication status between users, IoT devices, networks and servers, and allow for reproduction of failure situations.



# MAG-UX Selected References



Seoul Data Center



Seoul Metropolitan Office of Education



Gyeongsangnam-do Provincial Hall



Jeonbuk State Government



Gyeongsangnamdo Office of Education Education Information Institute



Jeonbuk State office of Education Future Education Research Institute



Gwangju Educational Research and Information Center



Busan Education Research and Information Center



Korea Employment Information Service



Health Insurance Review & Assessment Service



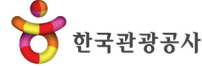
Korea Electric Power Corporation



Korea Housing Finance Corporation



Korea Financial Telecommunications and Clearings Institute



Korea Tourism Organization



Korea Gas Corporation



Korea Credit Guarantee Fund



Yonsei University



Hanyang University



Kyunghee University



Seoul National University of Science & Technology

# MAG-UX Certifications and Intellectual Properties



Trademarks **MAG-UX MagData**  
Patents: 45 cases (including pending)



23-0324



International Standard: ITU-T X.1813



Korean Standard: TTAE.IT-X.1813



No. 20170106316



R-R-MgD-MAG-UX 7500  
R-R-MgD-MAG-UX 5500  
R-R-MgD-MAG-UX 3500  
R-R-MgD-MAG-UX 1500  
R-R-MgD-MAG-UX 1400

## MagData Inc.

504, Pangyo 2nd Techno Valley Gyeonggi Enterprise Growth Center, 42, Changeop-ro, Sujeong-gu, Seongnam-si, Gyeonggi-do, Republic of Korea (13449)

+82-(0)2.6121.8470

+82-(0)31.753.6767

magdata.net

contact@magdata.net



## Partnership

